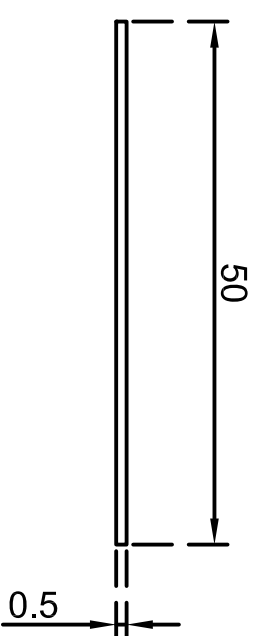
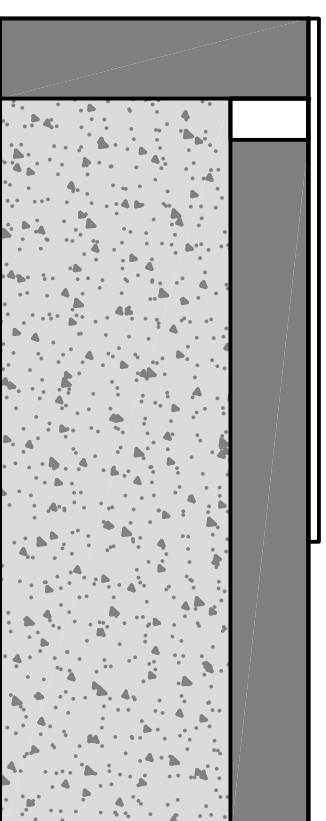


Concrete / Stone /
Masonry / Timber/
Blue Stone



Note: Maximum set
back of 15mm



Vinyl / Vitrified Porcelain
/ Ceramics / Glass /
Metals

Anti Slip Tape



STERLING
SUPPLIES

PRODUCT & INSTALLATION DETAILS

phone: 1800 621 103 email: sales@sterlingsupplies.com.au website: www.sterlingsupplies.com.au