

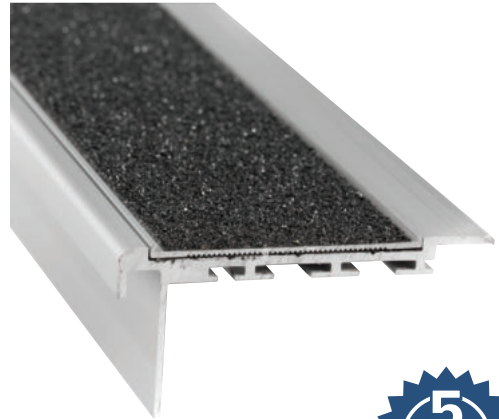
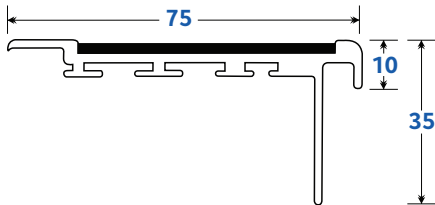


PRODUCT DATA SHEET

Stair Nosings

Carpex Carborundum

- Anodised aluminium with carborundum insert.
- Comprehensive colour range of anti-slip silicon carbide inserts.
- Concealed screw & glue fix for clean look.
- Suits 6mm thick carpet tile.
- Complies to AS/NZS 1428.1-2009.



Insert Colours	Clear Anodised	Black Anodised	Brass Anodised	Luminance Contrast
Black	SN-CAG-C/BLK	SN-CAG-BL/BLK	SN-CAG-BR/BLK	LRV: Dry 2.959, Wet 1.972
Grey	SN-CAG-C/GRY	SN-CAG-BL/GRY	SN-CAG-BR/GRY	LRV: Dry 15.474, Wet 15.475
White	SN-CAG-C/WHI	SN-CAG-BL/WHI	SN-CAG-BR/WHI	LRV: Dry 74.151, Wet 73.081
Yellow	SN-CAG-C/YLW	SN-CAG-BL/YLW	SN-CAG-BR/YLW	LRV: Dry 40.717, Wet 40.070

Size 75mm x 35mm x 10mm Lengths: 4.1 m

Slip Rating P5

Colours

ALUMINIUM COLOURS



CLEAR ANODISED



BLACK ANODISED



BRASS ANODISED

INSERT COLOURS



BLACK



GREY



WHITE



YELLOW

Applications

Education Institutions, Industrial Applications, Office Areas, Restaurants/Eating Establishments, Shopping Centres, Sports Facilities.

