



STERLING
SUPPLIES

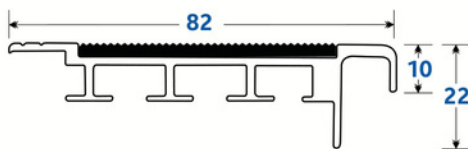
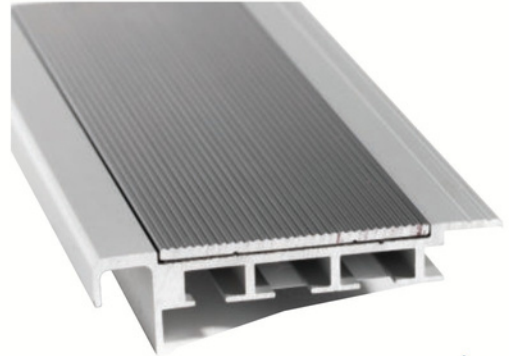
PRODUCT DATA SHEET

Stair Nosings

Carpex Corrugated Cushion Back

- Anodised aluminium with corrugated anodised aluminium insert.
- Comprehensive colour range of aluminium corrugated inserts.
- Concealed screw & glue fix for clean look.
- Suits 10mm thick carpet tile.
- Complies to AS 1428.1:2021.

We strongly recommend the use of our Icons Allrounder Adhesive when installing this Stair Nosing to maintain warranty eligibility.



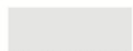
Insert Colours	Clear Anodised	Black Anodised	Brass Anodised	Luminance Contrast
Black	SN-CAC-C/BLK	SN-CAC-BL/BLK	SN-CAC-BR/BLK	LRV: Dry 3.697, Wet 3.640
Clear	SN-CAC-C/CLR	SN-CAC-BL/CLR	SN-CAC-BR/CLR	LRV: Dry 49.044, Wet 48.497
Brass	SN-CAC-C/BRA	SN-CAC-BL/BRA	SN-CAC-BR/BRA	LRV: Dry 32.524, Wet 32.527

Size 82mm x 22mm x 10mm Lengths: 4.1 m

Slip Rating P3

Colours

ALUMINIUM COLOURS



CLEAR ANODISED



BLACK ANODISED



BRASS ANODISED

INSERT COLOURS



BLACK



CLEAR



BRASS

Applications Education Institutions, Industrial Applications, Office Areas, Restaurants/Eating Establishments, Shopping Centres, Sports Facilities.

P 1800 621 103

E sales@sterlingsupplies.com.au

W www.sterlingsupplies.com.au

