



STERLING
SUPPLIES

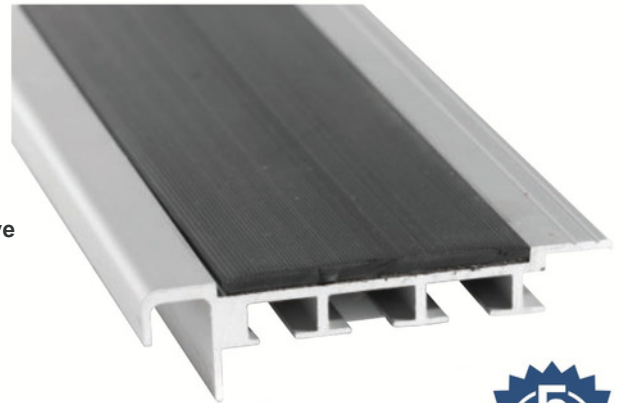
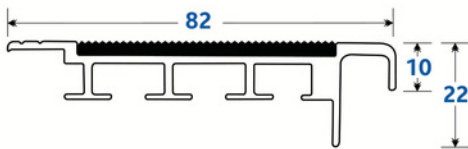
PRODUCT DATA SHEET

Stair Nosings

Carpex Ribbed Cushion Back

- Anodised aluminium with ribbed insert.
- Comprehensive colour range of ribbed polymeric inserts.
- Concealed screw & glue fix for clean look.
- Suits 10mm thick carpet tile.
- Complies to AS 1428.1:2021.

We strongly recommend the use of our Icons Allrounder Adhesive when installing this Stair Nosing to maintain warranty eligibility.



Insert Colours	Clear Anodised	Black Anodised	Brass Anodised	Luminance Contrast
Black	SN-CARCB-C/BLK	SN-CARCB-BL/BLK	SN-CARCB-BR/BLK	LRV: Dry 2.28, Wet 2.26
Grey	SN-CARCB-C/GRY	SN-CARCB-BL/GRY	SN-CARCB-BR/GRY	LRV: Dry 19.89, Wet 20.15
Yellow	SN-CARCB-C/YLW	SN-CARCB-BL/YLW	SN-CARCB-BR/YLW	LRV: Dry 34.01, Wet 32.83

Size 82mm x 22mm x 10mm Lengths: 4.1 m

Slip Rating P4

Colours

ALUMINIUM COLOURS



CLEAR ANODISED

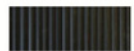


BLACK ANODISED



BRASS ANODISED

INSERT COLOURS



BLACK



GREY



YELLOW

Applications

Education Institutions, Industrial Applications, Office Areas, Restaurants/Eating Establishments, Shopping Centres, Sports Facilities.

P 1800 621 103

E sales@sterlingsupplies.com.au

W www.sterlingsupplies.com.au

