

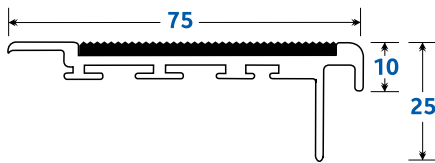
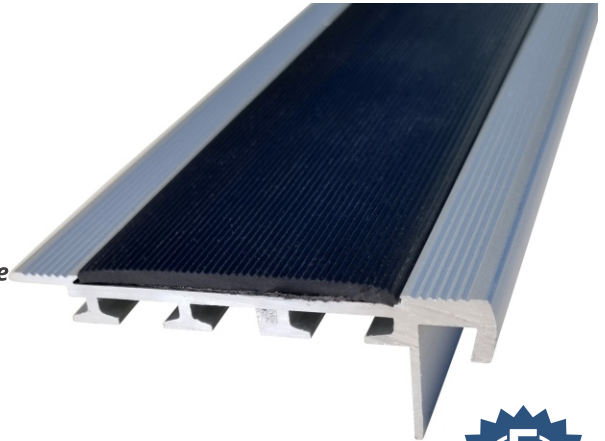


## PRODUCT DATA SHEET

### Stair Nosings **Carpex Ribbed**

- Anodised aluminium with ribbed insert
- Comprehensive colour range of ribbed polymeric inserts
- Concealed screw & glue fix for clean look
- Suits 6mm thick carpet tile
- Complies to AS/NZS 1428.1-2021

**We strongly recommend the use of our Iccons Allrounder Adhesive when installing this Stair Nosing to maintain warranty eligibility**



Insert Colours	Codes (Clear Anodised)	Codes (Black Anodised)	Codes (Brass Anodised)	Luminance Contrast
Black	SN-CAR-C/BLK	SN-CAR-BL/BLK	SN-CAR-BR/BLK	LRV: Dry 2.748, Wet 2.622
Grey	SN-CAR-C/GRY	SN-CAR-BL/GRY	SN-CAR-BR/GRY	LRV: Dry 17.494, Wet 47.428
Yellow	SN-CAR-C/YLW	SN-CAR-BL/YLW	SN-CAR-BR/YLW	LRV: Dry 44.553, Wet 44.211

**Size** 75mm x 25mm x 10mm. Lengths: 4.1m

**Slip Rating** P4

#### Colours

##### ALUMINIUM COLOURS



CLEAR ANODISED    BLACK ANODISED    BRASS ANODISED

##### INSERT COLOURS



BLACK    GREY    YELLOW

#### Applications

Education Institutions, Industrial Applications, Office Areas, Restaurants/Eating Establishments, Shopping Centres, Sports Facilities.

**P** 1800 621 103

**E** sales@sterlingsupplies.com.au

**W** www.sterlingsupplies.com.au

